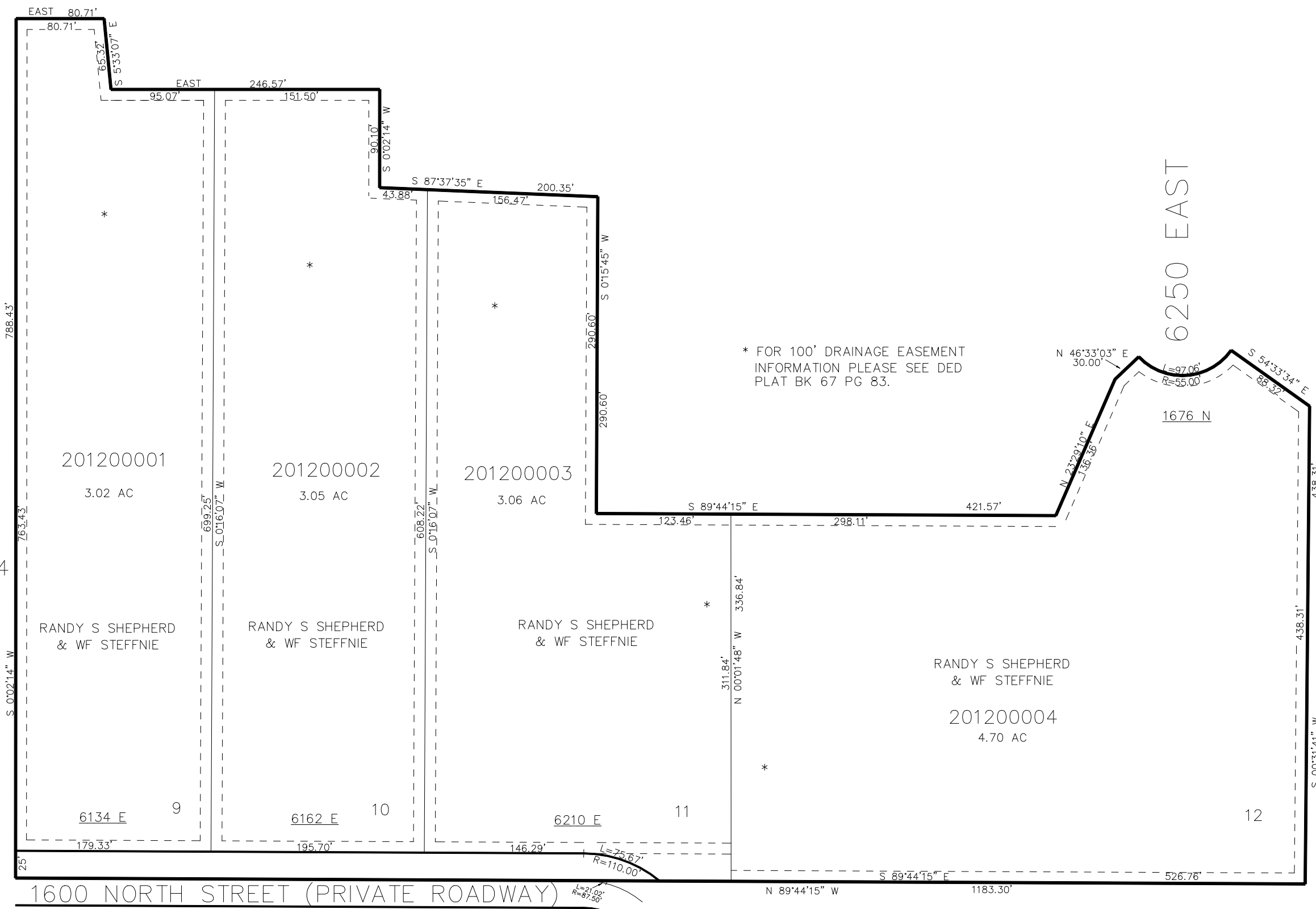


PART OF THE NE.1/4, OF SECTION 2, T.6N., R.1E., S.L.B. & M.  
HIDDEN HAVEN ESTATES SUBDIVISION LOT 3 1ST AMENDMENT

IN WEBER COUNTY  
SCALE 1" = 1:100'

TAXING UNIT: 317

SEE PAGE 104



SEE PAGE 2

FOR COMPLETE ENG DATA SEE ORIGINAL DEDICATION PLAT IN BOOK 67, PAGE 83 OF RECORDS.

10' UTILITY & DRAINAGE EASEMENTS EACH SIDE OF PROPERTY LINES AS INDICATED BY DASHED LINES EXCEPT AS OTHERWISE SHOWN.